



## EID Applicators



Use the red blunt pin and remove the black insert from the base of the jaws for applying EID tags.



Universal Total Tagger

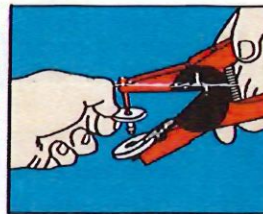
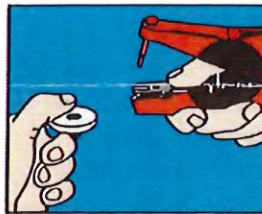


Universal Total Tagger+



EID Ultra Retract-O-Matic™

## Application Instructions for Allflex Electronic Identification Ear Tags



1. To load, depress spring clip and insert the female EID tag. Ensure that the raised portion of the tag, which encloses the transponder chip, is placed in the open portion of the jaws.
2. Slip the male tag completely onto the blunt applicator pin. Squeeze the jaws together lightly to ensure the male shaft is in line with the female.
3. Dip the jaws of the applicator holding the tag into an antiseptic or disinfectant solution.

## Recommended EID Tag Placement

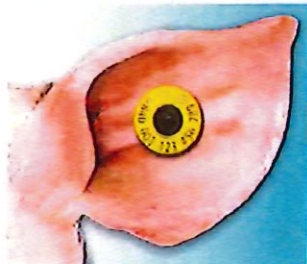
Application site must be free of foreign debris prior to placement of tags on the animal. Review application instruction prior to tagging.

**IMPORTANT:** Caution, "Free Air Space" is critical for proper healing and retention. Inspect placement after tagging to ensure there is sufficient space between ear and EID tag.



### FOR CATTLE

1. The EID tag should be placed in the middle of the ear between the two cartilage ribs close to the head.
2. The female portion of the tag should be on the inside of the ear with EID tag application. Note that this is a thicker part of the ear. Application may be more difficult than when applying a visual tag.



### FOR SWINE

1. Place the EID tag in the middle or thicker part of the ear
2. The male tag should be on the outside of the ear and the female (or EID tag) should be placed on the inside of the ear. Tag retention is improved when male tag lays flush against the back side of the ear.

**IMPORTANT:** Tag application may vary based on breed type and ear size.



### FOR SHEEP/GOAT

1. Place the EID tag in between the cartilage ribs of the ear, near the first quarter of the ear (closest to the head)
2. The female portion of the tag should be placed on the inside of the ear.

**CATTLE HAIR SAMPLE COLLECTION INSTRUCTIONS**



**1** Check the ear tag number of the animal, and record it on the hair sample envelope.

We strongly recommend that you collect tail switch hair. If this is not an option, then collect hair from the poll, neck or tail head. Clean the sample area with a paper towel to remove excess dirt if necessary.

Use bent nose, long nose or needle nose pliers to collect the sample.



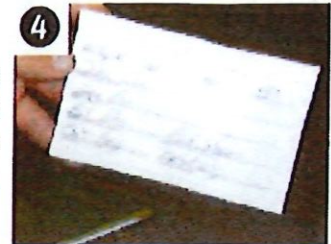
**2** Grasp the hair close to the skin with pliers and pull directly away from the skin. Take at least two pulls. Make sure that the sample has at least 40 hair roots. If tail switch is not available, then take at least 5 pulls from the poll, neck or tail head.



**3** Inspect the hair sample to ensure at least 40 hair follicles.

Do NOT cut the hair from the animal. The hair MUST CONTAIN ROOTS for DNA testing. Avoid touching the roots and make sure the hair is dry.

Place hairs in the sample envelope and seal the envelope. Do not put hairs in a plastic bag.



**4** Fill out the remaining information lines on the envelope, and have the witnesses sign.

**REMEMBER:** Cleanse hands and pliers between animal samples to ensure that hairs from different animals are not mixed.



**CATTLE HAIR SAMPLE CHECKLIST**

- ✓ Record ear tag number on the envelope
- ✓ Collect hair from tail switch
- ✓ Obtain at least 40 hairs with follicles
- ✓ Take at least 2 pulls
- ✓ Inspect for follicles—do NOT touch follicles
- ✓ Obtain exhibitor signature & seal envelope
- ✓ Clean pliers and hands between animals

**SHEEP & GOAT HAIR SAMPLE COLLECTION INSTRUCTIONS**

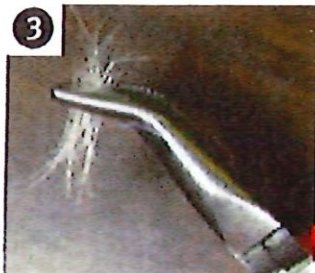


**1** Check the ear tag number of the animal, and record it on the hair sample envelope. Clean the sample area to remove dirt or other contaminants.

Use bent nose, long nose or needle nose pliers to collect the sample.



**2** Pull a tuft of hair from the leg, just above the toes. Pull the hair directly away from the skin, NOT at an angle. This will allow the root to come out with the hair. Take at least three pulls.



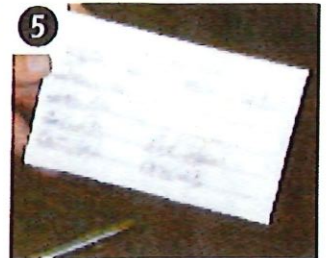
**3** Inspect the hairs sample to ensure at least 40 hair follicles or roots. The roots are easy to see in goats (like human hairs with a bulb at the end), but difficult in sheep. In sheep, you may notice a color variation which indicates that the root is intact.

**Note:** Do NOT cut the hair from the animal. The hair **MUST CONTAIN ROOTS** for DNA testing. Avoid touching the roots and make sure the hair is dry

Place the sample in the hair sample envelope, and then seal the envelope in the presence of the exhibitor and parent/supervisor. Do not put hairs in a plastic bag.



Fill out the remaining information lines on the envelope, and have the witnesses sign.



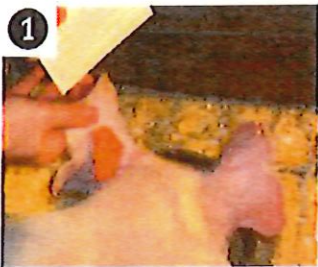
**REMEMBER:** Cleanse hands and pliers between animal samples to ensure that hairs from different animals are not mixed.



**SHEEP & GOAT SAMPLE CHECKLIST**

- ✓ Select collection area - we suggest above toes
- ✓ Record ear tag number on the envelope
- ✓ Obtain at least 40 hairs with follicles
- ✓ Take at least 3 pulls
- ✓ Inspect for follicles – do not touch follicles
- ✓ Obtain exhibitor signature & seal envelope
- ✓ Clean pliers and hands between animals

**SWINE HAIR SAMPLE COLLECTION INSTRUCTIONS**



**1** Check the ear tag number of the animal, and record it on the hair sample envelope.

We recommend coarse hair from the loin or rump. If the animal has been shaved, hair can usually be found between the toes, on the jowl/face,

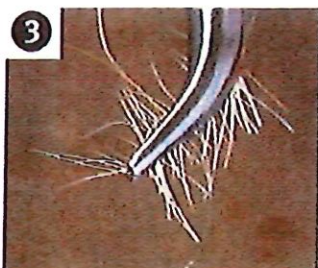
inside the ear, or around the tail head. Clean the sample area to remove dirt or other contaminants.

Use bent nose, long nose or needle nose pliers to pull the hair. You will need at least five pulls to get enough hair.



**2** Pull a tuft of hair from the animal. Pull the hair directly away from the skin, **NOT** at an angle. This will allow the hair root to come out with the hair.

**Note:** Do **NOT** cut the hair from the animal. The hair **MUST CONTAIN ROOTS** for DNA testing. Avoid touching the roots and make sure the hair is dry.



**3** Visually inspect the hairs for intact roots. Roots or follicles are easy to see (like human hairs with a bulb at the end). You may notice a color variation which indicates that the root is intact. A minimum of 40 hair roots is needed.

Place the sample in the hair sample envelope, and then seal the envelope in the presence of exhibitor and parent/supervisor.



Do not put hairs in a plastic bag.

Fill out the remaining information lines on the envelope, and have the witnesses sign.



**REMEMBER:** Cleanse hands and pliers between animal samples to ensure that hairs from different animals are not mixed.



**SWINE HAIR SAMPLE CHECKLIST**

- ✓ Select collection area—we suggest loin or rump
- ✓ Record ear tag number on the envelope
- ✓ Obtain at least 40 hairs with follicles
- ✓ Take at least 5 pulls
- ✓ Inspect for follicles—do **NOT** touch follicles
- ✓ Obtain exhibitor signature & seal envelope
- ✓ Clean pliers and hands between animals